

Proximal Humerus Locking Plate



PERI-LOC[◇] Locked Plating System

Proximal Humerus Locking Plate Surgical Technique

Table of Contents

Introduction	2
Indications	3
Plate Features	3
Patient Positioning	4
Incision	4
Fracture Reduction and Provisional Fixation	5
Plate Selection	5
Plate Positioning	6
Screw Insertion.....	7
3.5mm Locking Screw	8
3.5mm Cortex Screw	9
4.5mm Locking Screw	10
4.5mm Cortex Screw	10
Closure	11
Catalog Information	12

Nota Bene

The technique description herein is made available to the healthcare professional to illustrate the author's suggested treatment for the uncomplicated procedure. In the final analysis, the preferred treatment is that which addresses the needs of the specific patient.

Introduction

The PERI-LOC® Locked Plating System combines the advantages of locked plating with the versatility and benefits of traditional plates and screws. Utilizing both locking and non-locking screws, the PERI-LOC system allows for the creation of a fixed-angle construct capable of resisting angular collapse. Its enhanced stability also allows it to function as an effective fracture reduction aid.

A simple, intuitive instrument set featuring standardized drill bits and screwdrivers along with color-coded drill guides, helps make the PERI-LOC system efficient and easy to use.

The PERI-LOC Proximal Humerus Locking Plates are available in a variety of sizes and options and are compatible with both the PERI-LOC Small and Large Fragment Instrument and Implant Sets. Their precise screw trajectories, anatomic contour and locking/non-locking capabilities provide a stable construct for predictable reconstruction of complex fractures of the humerus.



Indications

The PERI-LOC[®] Proximal Humerus Locking Plates are indicated for fixation of fractures, non-unions and osteotomies of the humerus.

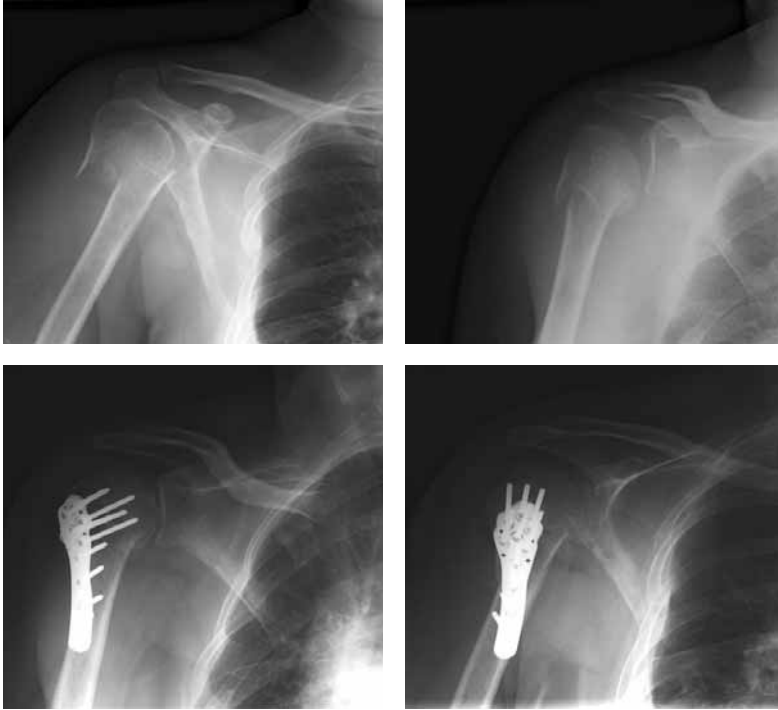


Plate Features

- 3.5mm and 4.5mm versions
- Curved plate shaft avoids excessive stripping of the deltoid
- Proximal scallops reduce plate profile
- Left/right-specific
- 316L stainless steel for strength
- Locking/non-locking option in all screw holes
- Divergent proximal screw trajectory for maximum pull-out strength
- Proximal suture holes with undercuts facilitate repair of soft tissues
- 3.5mm plate holes accept 3.5mm Cortex, 3.5mm Locking and 4.0mm Cancellous Screws
- 4.5mm plate holes accept 4.5mm Cortex, 4.5mm Locking, 5.7mm Cannulated Locking and 6.5mm Cancellous Screws



3.5mm Proximal Humerus Locking Plate



4.5mm Proximal Humerus Locking Plate

Surgical Technique

Patient Positioning

Place the patient in the beach chair or supine position on a radiolucent table. Lateralize the patient on the table to permit unimpeded mobility of the humerus.



Incision

A standard deltopectoral incision is made to expose the proximal humerus. Care should be taken to preserve soft tissue attachments to fracture fragments.



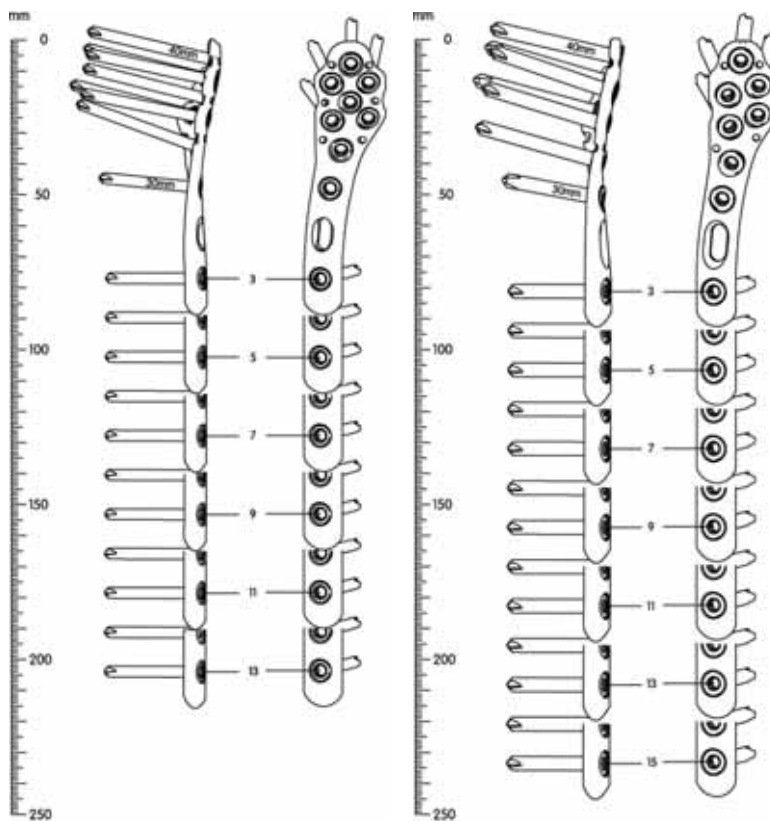
Fracture Reduction and Provisional Fixation

Reduce and provisionally fix the fracture under fluoroscopy with K-Wires, Reduction Forceps or suture fixation. Reduction aids should be placed so as not to interfere with final plate placement.

Plate Selection

Following fracture reduction, select the Proximal Humerus Locking Plate that best accommodates patient anatomy and fracture pattern.

Note The PERI-LOC[®] Proximal Humerus Locking Plate Preoperative Templates (7118-0976, 7118-0985) are available to assist with pre-operative radiographic planning.



3.5mm Proximal Humerus Locking Plate Preoperative Template
Cat. No. 7118-0976

4.5mm Proximal Humerus Locking Plate Preoperative Template
Cat. No. 7118-0985

Plate Positioning

Position the plate approximately 1cm distal to the rotator cuff attachment on the superior aspect of the greater tuberosity. The plate should sit posterolateral to the bicipital groove.

Avoid placement too far up on the humerus as this increases the risk of subacromial impingement. Similarly, placement too low may compromise distal screw purchase in the humeral head.

Note A Locking Drill Guide may be threaded into one of the shaft holes to act as an insertion handle during plate positioning.



Provisionally fix the plate to the humeral shaft using one 2.7mm x 18mm Provisional Fixation Pin (7117-3322). It is recommended that the pin be placed in the elongated slot in the plate to allow for implant repositioning. Alternatively, a Reduction Forceps may be used.



To check plate position, thread a 2.0mm K-Wire Locking Guide (7117-3491) into the most superior screw hole and insert a 2.0mm K-Wire (7116-1020) under fluoroscopy to the desired depth.

Distal screw placement may be determined threading a second 2.0mm K-Wire Locking Guide into the distal-most hole in the proximal portion of the plate and inserting a K-Wire.



Screw Insertion

The PERI-LOC[®] Proximal Humerus Locking Plate may be implanted using either a “proximal-first” or “shaft-first” screw insertion method.

Proximal-first Method

This technique allows for initial fixation of the plate to the humeral head followed by its reduction to the shaft.



Shaft-first Method

This technique allows for up to 5mm of proximal and/or distal plate translation along the humeral shaft prior to definitive fixation. To obtain maximum translation, the elongated slot in the plate shaft must be used.



3.5mm Locking Screw

Thread the 3.5mm Locking Drill Guide (7117-3538) with 2.7mm Locking Drill Guide Insert (7117-3529)* into the desired screw hole and drill accordingly with the 2.7mm Drill Bit (7117-3503).

Measure for screw length by reading the exposed calibrations off the drill bit or by using the 3.5mm Short Screw Depth Gauge (7117-3523).

Note Avoid insertion of screws that are too long as they could penetrate the joint in the instance of collapse at the fracture site. Appropriate length screws should stop approximately 5mm from the subchondral bone of the humeral head.



Attach the 3.5mm Hexdriver w/AO Quick Connect (7117-3537) to the Large Screwdriver Handle (7117-3547) and insert the appropriate length 3.5mm Self-Tapping Locking Screw**.

Note Locking screws may be inserted on power, but should always be tightened by hand in order to avoid loss of reduction, stripping of the screw head or damage to the screwdriver.



* The 2.7mm Locking Drill Guide-One Piece (7117-3450) may be substituted for the 3.5mm Locking Drill Guide with 2.7mm Locking Drill Guide Insert

** Screws may be inserted through the 3.5mm Drill Guide assembly, but it must be removed prior to insertion of a screw less than 24mm in length

3.5mm Cortex Screw

Insert the Universal Drill Guide Handle (7117-3349) with 2.7mm Neutral Locking Hole Insert (7117-3514) into the desired screw hole and drill accordingly with the 2.7mm Drill Bit.

Measure for screw length by reading the exposed calibrations off the drill bit or by using the 3.5mm Short Screw Depth Gauge.



Insert the appropriate length 3.5mm Self-Tapping Cortex Screw using the 3.5mm Hexdriver/Screwdriver Handle assembly. Fill remaining screw holes as desired.

Note If non-locking screws are to be used in the plate to gain compression, it is preferred that they be inserted prior to any locking screws.



4.5mm Locking Screw

Thread the 4.5/5.7mm Locking Screw Guide (7117-3539) with 3.5mm Locking Drill Guide Insert (7117-3530)* into the desired screw hole and drill accordingly with the 3.5mm Drill Bit (7117-3505).

Measure for screw length by reading the exposed calibrations off the drill bit or by using the Large Fragment Screw Depth Gauge (7117-3331).

Attach the 3.5mm Hexdriver w/AO Quick Connect (7117-3537) to the Large Screwdriver Handle (7117-3547) and insert the appropriate length 4.5mm Self-Tapping Locking Screw**.

Note Locking screws may be inserted on power, but should always be tightened by hand in order to avoid loss of reduction, stripping of the screw head or damage to the screwdriver.

4.5mm Cortex Screw

Insert the Universal Drill Guide Handle (7117-3349) with 3.5mm Neutral Locking Hole Insert (7117-3521) into the desired screw hole and drill accordingly with the 3.5mm Drill Bit.

Measure for screw length by reading the exposed calibrations off the drill bit or by using the Large Fragment Screw Depth Gauge.

Insert the appropriate length 4.5mm Self-Tapping Cortex Screw using the 3.5mm Hexdriver/Screwdriver Handle assembly. Fill remaining screw holes as desired.

* The 3.5mm Locking Drill Guide-One Piece (7117-3541) may be substituted for the 4.5/5.7mm Locking Drill Guide with 3.5mm Locking Drill Guide Insert

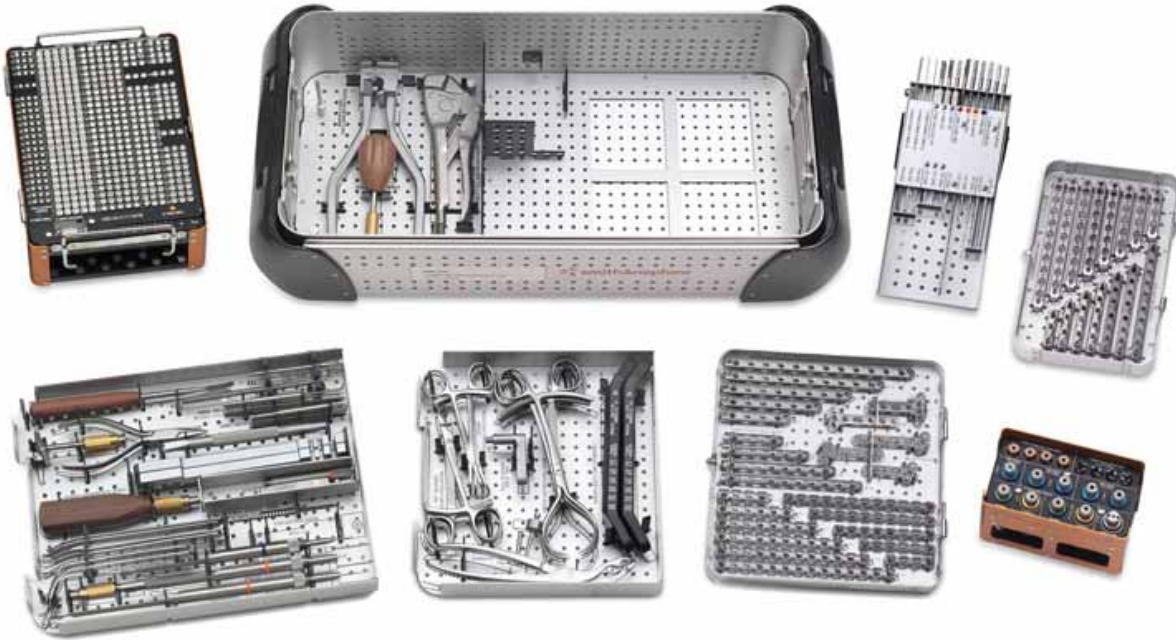
** Screws may be inserted through the 4.5/5.7mm Drill Guide assembly, but it must be removed prior to insertion of a screw less than 24mm in length

Closure

Obtain final radiographic images to confirm screw placement and fracture reduction. Wound closure follows standard technique.



Catalog Information



PERI-LOC[®] Small Fragment Instrument, Implant and Disposables Set

Set No. 7181-0220

Instrument Cases

Cat. No.	Description	Cat. No.	Description
7112-9400	Large Outer Case	7117-0353	Small Fragment Straight Plate Caddy
7112-9402	Lid for Outer Case	7117-0354	Small Fragment Screw Caddy
7117-0350	Small Fragment Drill Guide Caddy	7117-0359	Small Fragment Drill Caddy
7117-0352	Small Fragment Straight Locking Plate Caddy	7117-0361	Small Fragment Instrument Tray

Instruments

Cat. No.	Description	Tray Qty	Cat. No.	Description	Tray Qty
7117-0043	Sharp Hook	1 ea	7117-3487	3.5mm Self-Retaining Hexdriver Shaft w/AO Quick Connect, 178mm	2 ea
7117-0045	Screw Forceps	1 ea	7117-3510	2.7mm Drill Guide Insert	2 ea
7117-0057	Hohmann Retractor, 8mm	2 ea	7117-3511	2.7mm Compression Slot Insert	1 ea
7117-0063	Wire Bending Pliers, 140mm	1 ea	7117-3512	2.7mm Neutral Slot Insert	1 ea
7117-0076	Bending Pliers for 2.7mm & 3.5mm Plates	1 ea	7117-3513	3.5mm Drill Guide Insert	2 ea
7117-0095	Hohmann Retractor, 15mm	2 ea	7117-3514	2.7mm Neutral Locking Hole Insert	1 ea
7117-0097	Periosteal Elevator	1 ea	7117-3515	2.7mm Compression Locking Hole Insert	1 ea
7117-0175	Bending Pliers for 3.5mm Reconstruction Plates	1 ea	7117-3516	2.0mm Parallel Wire Drill Guide	1 ea
7117-3344	Countersink	1 ea	7117-3517	2.0mm Wire/Drill Insert	1 ea
7117-3349	Universal Drill Guide Handle	2 ea	7117-3523	Short 3.5mm Screw Depth Gauge	1 ea
7117-3369	Hohmann Retractor, Bent, 8mm	2 ea	7117-3525	2.7mm Screw Depth Gauge	1 ea
7117-3370	Reduction Forceps w/Ratchet, 205mm	2 ea	7117-3527	Cannulated K-Wire Bending Iron	1 ea
7117-3377	Reduction Forceps w/Points, Broad	2 ea	7117-3528	Cannulated AO-to-Trinkle Adaptor	1 ea
7117-3378	Reduction Forceps w/Serrated Jaw	2 ea	7117-3529	2.7mm Locking Drill Guide Insert	4 ea
7117-3482	Small Fragment Bending Irons	2 ea	7117-3534	3.5mm Screw Depth Gauge	1 ea

Instruments (continued)

Cat. No.	Description	Tray Qty	Cat. No.	Description	Tray Qty
7117-3535	2.5mm Hexdriver Shaft w/AO Quick Connect	2 ea	7117-3544	Self-centering Reverse Verbrugge Forceps, 190mm	1 ea
7117-3538	3.5mm Locking Screw Guide	4 ea	7117-3547	Large Screwdriver Handle w/AO Quick Connect	1 ea
7117-3542	Small T-Handle w/AO Quick Connect	1 ea	7117-3549	Small Fragment Drill Guide Removal Tool	1 ea
7117-3543	Teardrop Handle Screwdriver w/AO Quick Connect	1 ea			

Optional Instruments*

Cat. No.	Description	Tray Qty
7117-3488	3.5mm Self-Retaining Hexdriver w/AO Quick Connect, 119mm	1 ea
7117-3450	2.7mm Locking Drill Guide-One Piece	1 ea

Disposables

Cat. No.	Description	Tray Qty	Cat. No.	Description	Tray Qty
7116-1012	1.25mm x 150mm K-Wire w/Trocar Point	6 ea	7117-3555	2.0mm Short Calibrated Drill Bit w/AO Quick Connect, 93mm	2 ea
7116-1016	1.6mm x 150mm K-Wire w/Trocar Point	6 ea	7117-3502	2.7mm Short Calibrated Drill Bit w/AO Quick Connect, 155mm	2 ea
7116-1020	2.0mm x 150mm K-Wire w/Trocar Point	6 ea	7117-3503	2.7mm Calibrated Drill Bit w/AO Quick Connect, 220mm	2 ea
7117-3318	3.5mm Tap w/AO Quick Connect	2 ea	7117-3504	3.5mm Short Calibrated Drill Bit w/AO Quick Connect, 155mm	2 ea
7117-3366	2.7mm Tap w/AO Quick Connect	2 ea			
7117-3386	4.0mm Tap w/AO Quick Connect	2 ea			
7117-3322	2.7mm x 18mm Provisional Fixation Pin	4 ea			
7117-3323	2.7mm x 40mm Provisional Fixation Pin	4 ea			
7117-3501	2.0mm Calibrated Drill Bit w/AO Quick Connect, 190mm	2 ea			

Implants**2.7mm Self-Tapping
Cortex Screws**

Cat. No.	Length	Cat. No.	Length	Cat. No.	Length
7182-3010	10mm	7182-3026	26mm	7182-3045	45mm
7182-3012	12mm	7182-3028	28mm	7182-3050	50mm
7182-3014	14mm	7182-3030	30mm	7182-3055	55mm
7182-3016	16mm	7182-3032	32mm	7182-3060	60mm
7182-3018	18mm	7182-3034	34mm	7182-3065	65mm
7182-3020	20mm	7182-3036	36mm	7182-3070	70mm
7182-3022	22mm	7182-3038	38mm		
7182-3024	24mm	7182-3040	40mm		

*Not included in Set No. 7181-0220

Catalog Information

3.5mm Self-Tapping Cortex Screws

Cat. No.	Length	Cat. No.	Length	Cat. No.	Length
7182-4010	10mm	7182-4030	30mm	7182-4065	65mm
7182-4012	12mm	7182-4032	32mm	7182-4070	70mm
7182-4014	14mm	7182-4034	34mm	7182-4075	75mm
7182-4016	16mm	7182-4036	36mm	7182-4080	80mm
7182-4018	18mm	7182-4038	38mm	7180-4085*	85mm
7182-4020	20mm	7182-4040	40mm	7180-4090*	90mm
7182-4022	22mm	7182-4045	45mm	7180-4095*	95mm
7182-4024	24mm	7182-4050	50mm	7180-4100*	100mm
7182-4026	26mm	7182-4055	55mm	7180-4105*	105mm
7182-4028	28mm	7182-4060	60mm	7180-4110*	110mm

3.5mm Self-Tapping Locking Screws

Cat. No.	Length	Cat. No.	Length	Cat. No.	Length
7182-5010	10mm	7182-5030	30mm	7182-5065	65mm
7182-5012	12mm	7182-5032	32mm	7182-5070	70mm
7182-5014	14mm	7182-5034	34mm	7182-5075	75mm
7182-5016	16mm	7182-5036	36mm	7182-5080	80mm
7182-5018	18mm	7182-5038	38mm	7180-5085*	85mm
7182-5020	20mm	7182-5040	40mm	7180-5090*	90mm
7182-5022	22mm	7182-5045	45mm	7180-5095*	95mm
7182-5024	24mm	7182-5050	50mm	7180-5100*	100mm
7182-5026	26mm	7182-5055	55mm	7180-5105*	105mm
7182-5028	28mm	7182-5060	60mm	7180-5110*	110mm

* Available sterile only

4.0mm Cancellous Screws,
Fully Threaded

Cat. No.	Length	Cat. No.	Length	Cat. No.	Length
7182-5210	10mm	7182-5230	30mm	7182-5265	65mm
7182-5212	12mm	7182-5232	32mm	7182-5270	70mm
7182-5214	14mm	7182-5234	34mm	7182-5275	75mm
7182-5216	16mm	7182-5236	36mm	7182-5280	80mm
7182-5218	18mm	7182-5238	38mm	7180-5285*	85mm
7182-5220	20mm	7182-5240	40mm	7180-5290*	90mm
7182-5222	22mm	7182-5245	45mm	7180-5295*	95mm
7182-5224	24mm	7182-5250	50mm	7180-5300*	100mm
7182-5226	26mm	7182-5255	55mm		
7182-5228	28mm	7182-5260	60mm		

4.0mm Cancellous Screws,
Partially Threaded

Cat. No.	Length	Cat. No.	Length	Cat. No.	Length
7182-5310	10mm	7182-5330	30mm	7182-5365	65mm
7182-5312	12mm	7182-5332	32mm	7182-5370	70mm
7182-5314	14mm	7182-5334	34mm	7182-5375	75mm
7182-5316	16mm	7182-5336	36mm	7182-5380	80mm
7182-5318	18mm	7182-5338	38mm	7180-5385*	85mm
7182-5320	20mm	7182-5340	40mm	7180-5390*	90mm
7182-5322	22mm	7182-5345	45mm	7180-5395*	95mm
7182-5324	24mm	7182-5350	50mm	7180-5400*	100mm
7182-5326	26mm	7182-5355	55mm		
7182-5328	28mm	7182-5360	60mm		

Washer, 7.0mm Outer Diameter

Cat. No. 7114-3107

* Available sterile only

Catalog Information



PERI-LOC[®] Large Fragment System Instrument and Disposables Set

Set No. 7181-0221

Instrument Case

Cat. No.	Description
7112-9401	Small Outer Case
7112-9402	Lid for Outer Case
7117-0360	Large Fragment Drill Caddy
7117-0351	Large Fragment Drill Guide Caddy
7117-0362	Large Fragment Instrument Tray

Instruments

Cat. No.	Description	Tray Qty	Cat. No.	Description	Tray Qty
7117-0043	Sharp Hook	1 ea	7117-3522	3.5mm Compression Locking Hole Insert	1 ea
7117-0045	Screw Forceps	1 ea	7117-3526	5.7mm Cannulated Depth Gauge	1 ea
7117-0063	Wire Bending Pliers	1 ea	7117-3527	Cannulated Bending Iron for K-Wires	1 ea
7117-3331	Large Fragment Screw Depth Gauge	1 ea	7117-3528	Cannulated AO-to-Trinkle Adaptor	1 ea
7117-3349	Universal Drill Guide Handle	2 ea	7117-3530	3.5mm Locking Drill Guide Insert	2 ea
7117-3353	Large Fragment Countersink	1 ea	7117-3531	2.0mm K-Wire Locking Hole Insert	2 ea
7117-3393	Hohmann Retractor, Long	2 ea	7117-3532	4.5mm Locking Drill Guide Insert	2 ea
7117-3484	Large Fragment Bending Irons	2 ea	7117-3536	3.5mm Cannulated Hexdriver	2 ea
7117-3487	3.5mm Self-Retaining Hexdriver, 178mm	2 ea	7117-3539	4.5mm/5.7mm Locking Screw Guide	4 ea
7117-3513	3.5mm Drill Guide Insert	1 ea	7117-3540	4.7mm Hexdriver	2 ea
7117-3516	2.0mm Parallel Wire Guide Insert	1 ea	7117-3542	Small T-Handle w/AO Quick Connect	1 ea
7117-3517	2.0mm Wire/Drill Insert	1 ea	7117-3543	Tear Drop Screwdriver Handle w/AO Quick Connect	1 ea
7117-3518	3.5mm Compression Slot Insert	1 ea	7117-3547	Large Screwdriver Handle	1 ea
7117-3519	3.5mm Neutral Slot Insert	1 ea	7117-3550	Large Fragment Drill Guide Removal Tool	1 ea
7117-3520	4.5mm Drill Guide Insert	2 ea			
7117-3521	3.5mm Neutral Locking Hole Insert	1 ea			

Optional Instruments*

Cat. No.	Description	Tray Qty
7117-3488	3.5mm Self-Retaining Hexdriver w/AO Quick Connect, 119mm	1 ea
7117-3451	3.5mm Locking Drill Guide-One Piece	1 ea

*Not included in Set No. 7181-0221

Disposables

Cat. No.	Description	Tray Qty	Cat. No.	Description	Tray Qty
7116-1020	2.0mm x 150mm K-Wire	6 ea	7117-3506	4.5mm Calibrated Drill Bit w/ AO Quick Connect	2 ea
7116-3361	2.0mm x 228mm K-Wire	6 ea	7117-3508	4.5mm Cannulated Drill Bit w/ AO Quick Connect	2 ea
7117-3504	3.5mm Short Calibrated Drill Bit w/ AO Quick Connect	2 ea	7117-3319	4.5mm Tap	2 ea
7117-3505	3.5mm Calibrated Drill Bit w/ AO Quick Connect	2 ea	7117-3509	6.5mm Cancellous Tap	2 ea
7117-3507	4.5mm Short Calibrated Drill Bit w/ AO Quick Connect	2 ea	7117-3324	3.5mm x 18mm Provisional Fixation Pin	4 ea
			7117-3325	3.5mm x 40mm Provisional Fixation Pin	4 ea



PERI-LOC® Large Fragment Screw Set

Set No. 7181-0070

Instrument Case

Cat. No.	Description
7112-9400	Large Outer Case
7112-9402	Lid for Outer Case
7117-0363	Large Fragment Screw Tray
7117-0355	5.7mm Cannulated Locking Screw Caddy
7117-0356	4.5mm Self-Tapping Cortex Screw Caddy
7117-0357	4.5mm Self-Tapping Locking Screw Caddy
7117-0358	6.5mm Cancellous Screw Caddy
7117-0363	Large Fragment Screw Tray

Catalog Information

4.5mm Self-Tapping Cortex Screws

Cat. No.	Length	Cat. No.	Length	Cat. No.	Length
7180-6010*	10mm	7182-6042	42mm	7182-6074	74mm
7180-6012*	12mm	7182-6044	44mm	7182-6076	76mm
7182-6014	14mm	7182-6046	46mm	7182-6078	78mm
7182-6016	16mm	7182-6048	48mm	7182-6080	80mm
7182-6018	18mm	7182-6050	50mm	7182-6085	85mm
7182-6020	20mm	7182-6052	52mm	7182-6090	90mm
7182-6022	22mm	7182-6054	54mm	7182-6095	95mm
7182-6024	24mm	7182-6056	56mm	7182-6100	100mm
7182-6026	26mm	7182-6058	58mm	7180-6105*	105mm
7182-6028	28mm	7182-6060	60mm	7180-6110*	110mm
7182-6030	30mm	7182-6062	62mm	7180-6115*	115mm
7182-6032	32mm	7182-6064	64mm	7180-6120*	120mm
7182-6034	34mm	7182-6066	66mm	7180-6125*	125mm
7182-6036	36mm	7182-6068	68mm	7180-6130*	130mm
7182-6038	38mm	7182-6070	70mm		
7182-6040	40mm	7182-6072	72mm		

4.5mm Self-Tapping Locking Screws

Cat. No.	Length	Cat. No.	Length	Cat. No.	Length
7182-7010	10mm (Blunt-tip)	7182-7042	42mm	7182-7074	74mm
7182-7012	12mm (Blunt-tip)	7182-7044	44mm	7182-7076	76mm
7182-7014	14mm	7182-7046	46mm	7182-7078	78mm
7182-7016	16mm	7182-7048	48mm	7182-7080	80mm
7182-7018	18mm	7182-7050	50mm	7182-7085	85mm
7182-7020	20mm	7182-7052	52mm	7182-7090	90mm
7182-7022	22mm	7182-7054	54mm	7182-7095	95mm
7182-7024	24mm	7182-7056	56mm	7182-7100	100mm
7182-7026	26mm	7182-7058	58mm	7180-7105*	105mm
7182-7028	28mm	7182-7060	60mm	7180-7110*	110mm
7182-7030	30mm	7182-7062	62mm	7180-7115*	115mm
7182-7032	32mm	7182-7064	64mm	7180-7120*	120mm
7182-7034	34mm	7182-7066	66mm	7180-7125*	125mm
7182-7036	36mm	7182-7068	68mm	7180-7130*	130mm
7182-7038	38mm	7182-7070	70mm		
7182-7040	40mm	7182-7072	72mm		

* Available sterile only

5.7mm Cannulated Locking Screws

Cat. No.	Length	Cat. No.	Length	Cat. No.	Length
7182-8020	20mm	7182-8055	55mm	7182-6090	90mm
7182-8025	25mm	7182-8060	60mm	7182-6095	95mm
7182-8030	30mm	7182-6065	65mm	7182-6100	100mm
7182-8035	35mm	7182-6070	70mm	7180-8105*	105mm
7182-8040	40mm	7182-6075	75mm	7180-8110*	110mm
7182-8045	45mm	7182-6080	80mm	7180-8115*	115mm
7182-8050	50mm	7182-6085	85mm	7180-8120*	120mm

6.5mm Cancellous Screws, Partially Threaded

Cat. No.	Length	Cat. No.	Length
7182-8150	50mm	7182-8180	80mm
7182-8155	55mm	7182-8185	85mm
7182-8160	60mm	7182-8190	90mm
7182-8165	65mm	7182-8195	95mm
7182-8170	70mm	7182-8100	100mm
7182-8175	75mm		

Washer, 10mm Outer Diameter

Cat. No. 7114-3110

Washer, 13mm Outer Diameter

Cat. No. 7114-3113

* Available sterile only

Catalog Information



PERI-LOC[®] Locking Shoulder Plate Set

Set No. 7181-1004

Instrument Case

Cat. No.	Description
7112-9401	Small Outer Case
7112-9402	Lid for Outer Case
7117-0395	Locking Shoulder Plate Tray

Instruments

Cat. No.	Description	Tray Qty
7117-3491	2.0mm K-Wire Locking Guide	1 ea

3.5mm Proximal Humerus Plates

Cat. No.	Description	Length	Cat. No.	Description	Length
7182-1303	3H, Right	89mm	7182-1403	3H, Left	89mm
7182-1305	5H, Right	115mm	7182-1405	5H, Left	115mm
7182-1307	7H, Right	140mm	7182-1407	7H, Left	140mm
7182-1309*	9H, Right	165mm	7182-1409*	9H, Left	165mm
7182-1311*	11H, Right	191mm	7182-1411*	11H, Left	191mm
7182-1313*	13H, Right	216mm	7182-1413*	13H, Left	216mm

4.5mm Proximal Humerus Plates

Cat. No.	Description	Length	Cat. No.	Description	Length
7180-1503**	3H, Right	93mm	7180-1603**	3H, Left	93mm
7180-1505**	5H, Right	119mm	7180-1605**	5H, Left	119mm
7180-1507**	7H, Right	144mm	7180-1607**	7H, Left	144mm
7180-1509**	9H, Right	169mm	7180-1609**	9H, Left	169mm
7180-1511**	11H, Right	195mm	7180-1611**	11H, Left	195mm
7180-1513**	13H, Right	220mm	7180-1613**	13H, Left	220mm
7180-1515**	15H, Right	246mm	7180-1615**	15H, Left	246mm

* Additionally available

** Available sterile only



Eurociencia C.A., Venezuela

Oficina Comercial: Calle Santa Ana, Edif. Centro Peñafiel, Piso 2, Ofic. 2A, Urb Boleíta Sur, Caracas, Telf.: (0212) 7007900. 0-800CIENCIA (0800-2436242), Fax (0212) 232.5855 - Oficina Principal: Calle Santa Ana, Edif. Centro Peñafiel, Piso 1, Ofic. 1-E, Urb. Boleíta Sur, Caracas. Telf.: (0212) 700.7900, Fax: (0212) 237.6393 - Sucursal Valencia: Av. Bolívar Norte, C.C.P. Camoruco, Nivel 3, Ofic. S28, Valencia, Edo. Carabobo. Telfs.: (0241) 619.3920 / 3921, Fax: (0241) 826.3850 - Oficina Maracay: Av. Las Delicias, Torre Maracay, Piso 3, Ofic 3, Urb. El Bosque, Maracay, Edo. Aragua. Telf.: (0243) 217.9271, Fax: (0243) 233.6791 - Sucursal Maracaibo: C.C. Las Virginias, Piso 1, Local 1-2, Urb. Las Virginias, Maracaibo, Edo. Zulia. Telf.: (0261) 719.3300. Fax: (0261) 793.3241

www.eurociencia.com.ve